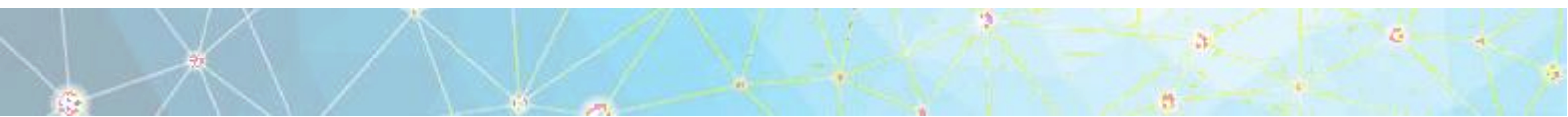




<b>Thematic Area</b>	Clinical Research
<b>Main Goals</b>	<p>The Unit develops its activity in the scientific domains of Periodontology, Preventive/ Community Dentistry, Oral Surgery, Implantology, Oral Pathology, Restorative Dentistry, Oral Rehabilitation, Endodontics, Pediatric Dentistry, Odontogeriatrics and Dental Materials promoting research, teaching and medical care provided by IUEM faculty, staff and students. The CRU is a structure of coordination and support for clinical research projects and pre- and post-graduate training.</p>

<b>Head</b>	José João Mendes / Ricardo Alves
<b>Group</b>	Ana Mano Azul André Mariz Almeida Alexandre Santos Ana Cristina Manso Ana Delgado António Mano Azul Carlos Zagalo Catarina Izidoro Cecília Rozan Dinis Pereira Eugénio Pereira Filipa Sousa Gil Alcoforado Gunel Kisi Hélder Costa Inês Caetano Santos Irene Ventura João Albernaz João Botelho João Gaspar João Rua

José João Mendes  
José Maria Cardoso  
Luísa bandeira Lopes  
Mariana Morgado  
Pedro Cebola  
Pedro Mariano Pereira  
Paulo Maurício  
Paulo Monteiro  
Paulo Retto  
Pedro Rodrigues  
Pedro Trancoso  
Raquel Barata  
Ricardo Alves  
Sérgio Félix  
Teresa Sobral Costa  
Vítor Tavares





**Ongoing Research  
Projects**

Association between IL-1 and IL-1Ra Gene Polymorphisms with Peri- Implantitis

Relationship between metalloproteinases 8 and 9 promoter gene polymorphisms, protein activity and periodontitis susceptibility in a Portuguese population

Periodontal treatment impact on halitosis and quality of life

NOx Sensing: measuring nitric oxides metabolites in physiological samples (NO2Probe)

Digital Skills of Dental Students

The effect of A-PRF on preventing systemic inflammation: A pilot randomized controlled clinical trial

Comparação entre osseodensificação e protocolos convencionais de osteotomia para preparação do leito implantar

Predição do sexo e da idade através de medidas dentárias e radiográficas: elaboração e validação de modelos forenses para a população portuguesa

Identify\_virtualidade real e háptico no ensino em implantologia dentária e dentisteria operatória\_uma abordagem à simulação multimodal

Implementação e avaliação de metodologias de ensino-aprendizagem baseadas em casos com recursos video - aplicação transversal e integrada no ensino pregraduado de Medicina dentária

Factores morfológicos preditivos para a prescrição de dispositivo de avanço mandibular na abordagem terapêutica da síndrome de apneia obstrutiva do sono

Avaliação do benefício dos probióticos em condições periimplantares nos parâmetros clínicos microbiológicos e imunológicos: ensaio clínico randomizado controlado por placebo.

Instituto de Ciências Biomédicas Abel Salazar  
Hospital das Forças Armadas  
Nuncifarma  
INIBSA

**National Partnerships**

EuroHealthNet  
Universidade Complutense de Madrid  
Camlog/Biohorizons  
Neobiotech  
Osteogenics

**International Partnerships**

**Advisers**

**Publications (10 most relevant, last 5 years)**

Machado Vanessa, Botelho João, Escalda Cláudia, Hussain Syed Basit, Luthra Shailly, Mascarenhas Paulo, Orlandi Marco, Mendes José João, D'Aiuto Francesco  
Serum C-Reactive Protein and Periodontitis: A Systematic Review and Meta-Analysis  
Frontiers in Immunology (2021) 12:3054  
DOI=10.3389/fimmu.2021.706432

Lopes, L.B., Machado, V., Mascarenhas, P. *et al.* The prevalence of molar-incisor hypomineralization: a systematic review and meta-analysis. *Sci Rep* 11, 22405 (2021). <https://doi.org/10.1038/s41598-021-01541-7>

Botelho, J., Machado, V., Leira, Y., Proença, L., Chambrone, L., & Mendes, J. J. (2021). Economic burden of periodontitis in the United States and Europe - an updated estimation. *Journal of periodontology*, 10.1002/JPER.21-0111. Advance online publication. <https://doi.org/10.1002/JPER.21-0111>

Bleyan, S.; Gaspar, J.; Huwais, S.; Schwimer, C.; Mazor, Z.; Mendes, J.J.; Neiva, R. Molar Septum Expansion with Osseodensification for Immediate Implant Placement, Retrospective Multicenter Study with Up-to-5-Year Follow-Up, Introducing a New Molar Socket Classification. *J. Funct. Biomater.* 2021, 12, 66. <https://doi.org/10.3390/jfb12040066>

Carvalho, R., Botelho, J., Machado, V., Mascarenhas, P., Alcoforado, G., Mendes, J. J., & Chambrone, L. (2021). Predictors of tooth loss during long-term periodontal maintenance: An updated systematic

review. *Journal of clinical periodontology*, 48(8), 1019–1036. <https://doi.org/10.1111/jcpe.13488>

Escalda, C., Botelho, J., Mendes, J.J. *et al.* Association of bacterial vaginosis with periodontitis in a cross-sectional American nationwide survey. *Sci Rep* 11, 630 (2021). <https://doi.org/10.1038/s41598-020-79496-4>

Gaspar, J., Proença, L., Botelho, J., Machado, V., Chambrone, L., Neiva, R., & Mendes, J. J. (2021). Implant Stability of Osseodensification Drilling Versus Conventional Surgical Technique: A Systematic Review. *The International journal of oral & maxillofacial implants*, 36(6), 1104–1110.

Izidoro, C.; Botelho, J.; Machado, V.; Reis, A.M.; Proença, L.; Alves, R.; Mendes, J.J. Periodontitis, Halitosis and Oral-Health-Related Quality of Life—A Cross-Sectional Study. *J. Clin. Med.* 2021, 10, 4415. <https://doi.org/10.3390/jcm10194415>

Paulo Melo, Américo Afonso, Luis Monteiro, Otília Lopes, Ricardo Castro Alves. COVID-19 Management in Clinical Dental Care Part II: Personal Protective Equipment for the Dental Care Professionals. *International Dental Journal. Int Dent J.* 2021 Jun;71(3):263-270. doi: 10.1016/j.identj.2021.01.007.

Riad, A.; Huang, Y.; Abdulqader, H.; Morgado, M.; Domnori, S.; Koščík, M.; Mendes, J.J.; Klugar, M.; Kateeb, E.; IADS-SCORE. Universal Predictors of Dental Students' Attitudes towards COVID-19 Vaccination: Machine Learning-Based Approach. *Vaccines* 2021, 9, 1158. <https://doi.org/10.3390/vaccines9101158>

Santos, A., Botelho, J., Machado, V., Borrecho, G., Proença, L., Mendes, J. J., Mascarenhas, P., & Alcoforado, G. (2021). Autogenous Mineralized Dentin versus Xenograft granules in Ridge Preservation for Delayed Implantation in Post-extraction Sites: A Randomized controlled clinical trial with an 18 months follow-up. *Clinical oral implants research*, 32(8), 905–915. <https://doi.org/10.1111/clr.13765>

Schwarz, F., Alcoforado, G., Guerrero, A., Jönsson, D., Klinge, B., Lang, N., Mattheos, N., Mertens, B., Pitta, J., Ramanauskaitė, A., Sayardoust, S., Sanz-Martin, I., Stavropoulos, A., & Heitz-Mayfield, L. (2021). Peri-implantitis: Summary and consensus statements of group 3. The 6th EAO Consensus Conference 2021. *Clinical oral implants research*, 32 Suppl 21, 245–253. <https://doi.org/10.1111/clr.13827>

<b>Equipment/Techniques</b>	Periotron 8000
	Cone Beam CT scan
	Intra-oral scanner





<b>Announcements</b>	
<b>Some Pictures</b>	
<b>Location</b>	Campus Universitário, Quinta da Granja, 2829 - 511 Monte de Caparica, Almada
<b>Links</b>	<a href="http://ciem.egasmoniz.edu.pt/pt-pt/research/research-labs.aspx">http://ciem.egasmoniz.edu.pt/pt-pt/research/research-labs.aspx</a>

